

January 18th to January 25th Helsinki, Finland
ISU European Figure Skating Championships® 2009

Announcement



Organized by Finnish Figure Skating Association

Announcement

ISU European Figure Skating Championships® 2009
January 18th - January 25th, 2009

Helsinki, Finland

1. GENERAL REGULATIONS

The ISU European Figure Skating Championships 2009 will be conducted in accordance with the ISU Constitution and General Regulations 2008, the ISU Special Regulations & Technical Rules Single & Pairs Skating and Ice Dance 2008, as well as all pertinent ISU Communications.

Participation in the ISU European Figure Skating Championships 2009 is open to all Competitors who belong to an ISU Member, Rule 130, paragraph 2 and qualify with regard to eligibility according to Rule 102, provided their ages fall within the limits specified in Rule 108, paragraph 2 and they meet the participation, citizenship and residency requirements in Rule 109, paragraphs 1 through 5 and Communication No. 1420.

In accordance with Rule 109 of the ISU Regulations and ISU Communication No. 1420, all skaters who do not have the nationality of the Member by which they have been entered or who, although having such nationality, have in the past represented another Member, must produce an ISU Clearance Certificate.

2. TECHNICAL DATA

All Championship events as well as some official practices will take place at the “Hartwall Arena”, main arena (30 meters x 60 meters). The remainder of the official practices will take place at the “Hartwall Arena – practice rink”, (28 meters x 58 meters). These two facilities are located in the same building under one roof. Both are indoor, heated artificial ice surfaces.

2.1 Single Skating – Men and Ladies

Short Program	Duration: 2 minutes and 50 seconds maximum, but may be less The required elements to be skated are listed in Rule 510, paragraphs 1 and 2 and the respected ISU Communication.
Free Skating	Duration: Men: 4 minutes and 30 seconds, +/- 10 seconds Ladies: 4 minutes, +/- seconds In accordance with Rule 520.
Factors	The multiplying factors for the Program Components for Single Skating are listed in Rule 353, paragraph 1, m).

2.2 Pairs

Short Program	Duration: 2 minutes and 50 seconds maximum, but may be less The required elements to be skated are listed in Rule 513, paragraphs 2 and 3, Group C and the respective ISU Communication.
Free Skating	Duration: 4 minutes and 30 seconds, +/- 10 seconds In accordance with Rule 521.
Factors	The multiplying factors for the Program Components for Pairs are listed in Rule 353, paragraph 1, m).

2.3 Ice Dance

<p>Compulsory Dance</p>	<p>In accordance with Rules 335, 608, and 639, paragraph 2 the one (1) Compulsory Dance from the dances listed below shall be drawn at the ISU Grand Prix of Figure Skating Final (Senior) 2008/2009.</p> <p>According to ISU Communication 1449, one of the three following compulsory dances will be skated:</p> <ul style="list-style-type: none"> # 7 Viennese Waltz # 15 Finnstep # 16 Paso Doble
<p>Original Dance</p>	<p>In accordance with ISU Technical Rules Ice Dance 2008, Rule 609 and all pertinent ISU Communications.</p> <p>The rhythm for the Original Dance is the Rhythms and Dances 1920's, 1930's or 1940's</p> <p>Any one or two rhythms/dances originated in the 1920's or 1930's or 1940's may be chosen (except Tango). If two rhythms are used one of them may be repeated. The program should reflect the original flavor and style of the decades mentioned above and NOT performed as a Ballroom Dance.</p> <p>For general information concerning the rhythms (dances) which belong to the above mentioned decades please refer to the "Ice Dance Music Rhythms Booklet and Compact Disc 1995".</p> <p>Variations of tempo within one selection of music are permitted. If only one rhythm /dance is chosen two different tunes of this rhythm may be used and which may differ in tempo.</p> <p>Original orchestration of the music of the 1920's, 1930's or 1940's is not required. However, the orchestration must be in the style of the decade chosen.</p> <p>Vocal music is permitted.</p> <p>Duration: 2 minutes and 30 seconds, +/- 10 seconds</p>
<p>Free Dance</p>	<p>Duration: 4 minutes, +/- 10 seconds</p> <p>In accordance with the Rule 610 and all pertinent ISU Communication.</p>
<p>Factors</p>	<p>The multiplying factors for the Program Components for Ice Dance are listed in Rule 353, paragraph 1.n).</p>



3. ENTRIES

3.1 Entries of Competitors

Entries must reach the Organizing Committee, the ISU Sport Director Figure Skating and the ISU Secretariat by letter, fax or electronic mail not later than **December 29, 2008** (see Rule 378, paragraph 1).

Entries must be accompanied by the official "ISU Declaration Form" as per Rule 131. Entries by fax or e-mail must be confirmed by a letter sent out simultaneously to the Organizers (Rule 115, paragraph 5).

The completed Declaration Form must be signed by the competitors and also by all officials (including team officials) appointed by the Member serving at an ISU Event (Judges, Team Leaders, and also those Coaches, Choreographers, Team Medical Doctors, Physiotherapists, Team Officials who are requesting accreditation for the Event).

In case of competitors who are not full of age (under 18), such Declaration must be co-signed by at least one of the parents or other guardian at law.

Each Entry Form and Declaration Form must be signed by an authorized ISU Member Representative such as President, General Secretary, Executive Director, CEO (Rule 104, paragraph 4).

For more details please refer to Rules 115, 131, 378 and ISU Communication No. 1523 or any update of this Communication.

ISU European Figure Skating Championships 2009

Finnish Figure Skating Association

Radiokatu 20

FIN-00093 SLU, Helsinki, Finland

Phone: +358 400 819 179 or +358 400 861 307

Fax: +358 9 3487 2044

E-mail: info.ec2009@gmail.com

and to:

ISU Sport Director Figure Skating

Mrs. Felicitas Babusikova

Dankovskeho 11

811 03 Bratislava, Slovak Republic

Phone: +421 2 5441 4279

Fax : +421 2 5441 4279

E-mail : felicitas.babusikova@gmail.com

International Skating Union

Chemin de Primerose 2

CH-1007 Lausanne

Switzerland

Phone: +41 21 612 6666

Fax : +41 21 612 6677

E-mail : info@isu.ch

Preliminary entries (by number) must reach the ISU Secretariat and the Organizing Committee no later than **October 1st, 2008**.

Entries must reach the ISU Sport Director Figure Skating, the ISU Secretariat and the Organizing Committee not later than **December 29th, 2008** (see Rule 378, paragraph 1). Entries must be made by the Member concerned and must be forwarded by letter, fax or electronic mail. **Entries by e-mail and fax must be confirmed by a letter to the Organizer sent out simultaneously (Rule 115, para 5).**

3.2 Entries of Team Members

Official entries of Team Leaders, Assistant Team Leaders, Team Officials, Team Medical Staff and Coaches and the partner or relative of a Judge will be accepted. Meals and lodging will be provided for only one Team Leader for each participating Member (see Rule 137).

Accreditation will be provided to those who are officially accepted by the Organizer.

Please be advised that only one Coach per Skater will be accredited. An Assistant Team Leader will be accepted for Teams having six (6) and more Skaters. Only two Team Officials of each Member, including the Member President provided that they are Council Members, Technical Committee Members or Members of the Head Office of their Federation, will be accredited. Not more than one (1) Team Doctor and one (1) Team Physiotherapist will be accepted as the Team Medical Staff, for which the organizer requests the right to have a medical certification (document) presented before accreditation. A partner or relative of a Judge will be accepted for restricted accreditation. The Member Federations guarantee that the requested accreditation of Team Members will correspond to their function within the team.

The names of Team Leaders, Assistant Team Leaders, Team Officials, Team Medical Staff and Coaches must be listed on the Entry Form "Composition of Delegation". Judges and Judges' partner or relative are to be listed on that separate form.

For Chaperons (one per competitor) the Team Leader can request a "bus permit" which will include access to practices. Chaperones will not stay in the Official Skating Family Hotel. Due to new ISU policy the chaperons will not receive any special price tickets to the competition events or the Exhibition.

All Forms must be returned to the Organizer by registered mail or fax not later than **December 29th, 2008**.

All competitors must turn in to the Organizing Committee together with the entry forms the "Program Content Sheet". It is not permitted to hand over the Program Content Sheets directly to the acting Officials.

Please note that the procedures in regard to entry forms and declaration forms as outlined in ISU Communication 1523 need to be strictly observed.

4. JUDGES

4.1 Nomination of Judges

According to ISU Special Regulations & Technical Rules Single & Pairs Skating and Ice Dance 2008, Rules 582 and 660, the official **entry form for Judges by number** must reach the ISU Director General by **October 1st, 2008**, indicating with the entry, in which discipline of the European Figure Skating Championships 2009 the Member intend to participate in the respective draw, to be held between October 1st and November 15th, 2008. The Member must also indicate with the entry, which Judge will be available to judge the Pair discipline.

In accordance with the draw results the official **entry form for Judges by name** must reach the ISU Sport Director Figure Skating, the ISU Secretariat and the Organizer not later than **December 5th, 2008** (see Rules 582 and 627).

ISU European Figure Skating Championships 2009 Finnish Figure Skating Association Radiokatu 20 FIN-00093 SLU, Helsinki, Finland Phone: +358 400 819 179 or +358 400 861 307 Fax: +358 9 3487 2044 E-mail: info.ec2009@gmail.com	
and to:	
ISU Sport Director Figure Skating Mrs. Felicitas Babusikova Dankovskeho 11 811 03 Bratislava, Slovak Republic Phone: +421 2 5441 4279 Fax : +421 2 5441 4279 E-mail : felicitas.babusikova@gmail.com	International Skating Union Chemin de Primerose 2 CH-1007 Lausanne Switzerland Phone: +41 21 612 6666 Fax : +41 21 612 6677 E-mail : info@isu.ch

Entries must be made by the Member concerned and must be forwarded by letter, fax or electronic mail.
Entries by e-mail or fax must be confirmed by a letter to the Organizer sent out simultaneously.

Please note that the procedures in regard to entry forms and declaration forms as outlined in ISU Communication 1523 need to be strictly observed.

4.2 Judges Meeting, Draw and Event Review Meetings

The individual Judges Meetings and – if applicable – an additional Judges draw will be held one (1) day prior to each first segment of each individual discipline. The draw for the seating order of the panels of Judges will be made 45 min. prior to each segment. Subsequent draws, as required, will be made at “Hartwall Arena” in the intermediate draw room. A detailed draw schedule will be published on site.

Judges’ Round Table Discussions are scheduled the day following the conclusion of the respective event.

5. MEALS, LODGING, PREPAYMENT AND TRAVEL EXPENSES

In accordance with Rule 137, paragraph 15c, the Organizing Committee will provide and cover the expenses for rooms and meals for all Competitors participating, the Technical Controllers and Technical Specialists and for one Team Leader of each participating ISU Member. The Organizing Committee will cover the above mentioned expenses beginning with dinner on **Saturday, January 17th, 2009**, through lunch on **Monday, January 26th, 2009**.

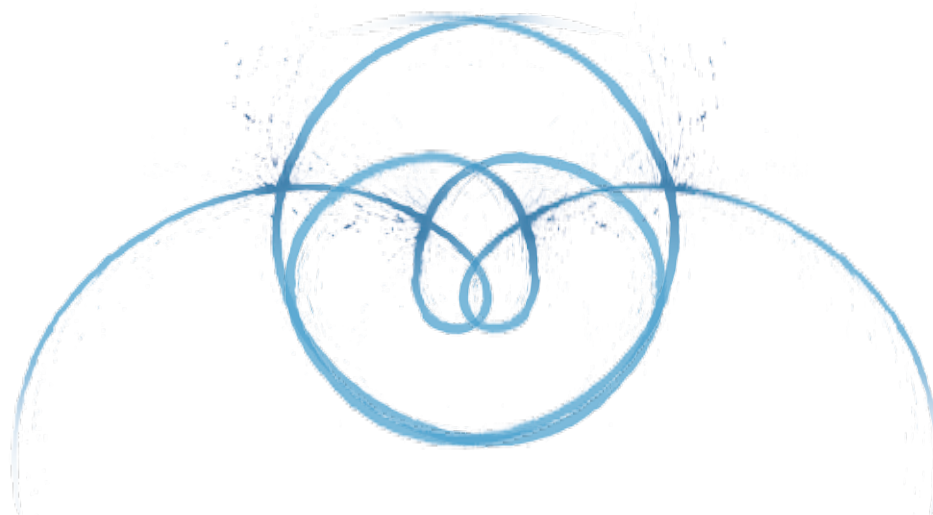
In accordance with Rule 137, paragraph 15b, the Organizing Committee will provide and cover the expenses for rooms and meals for Referees, Data Operators, Replay Operators, OAC Members and for Judges, drawn for the Championships. The Organizing Committee will cover the above mentioned expenses beginning with lunch on **Sunday, January 18th, 2009**, through lunch on **Monday, January 26th, 2009**.

Should any Competitor or Official arrive at the Hotel before or stay later than the period described above, room and meal costs will be the responsibility of the individual and must be paid on arrival.

All extra expenses incurred by any Competitor or any kind of Official will be the responsibility of the individual and must be paid prior to departure.

The Organizing Committee requests for all Team Members whose accommodation expenses are not covered by the Organizing Committee as outlined above, to make a pre-payment (deposit) to guarantee the availability of required rooms. Please use the official forms received with the first Information Letter for booking and calculation. The pre-payment (50% of the total amount) must be made by **November 1st, 2008**. The terms of payment for the remainder will be published well in time through the Organizing Committee.

Travel expenses will be paid in accordance with Rule 137. Out of pocket expenses for Referees, Technical Controller, Technical Specialists, OAC Members, Judges, Data and Replay Operators will be paid in accordance with the Memorandum for Guidance in Holding ISU Figure Skating Championships and ISU Communication No. 1401 or any update of this Communication. Payments will be provided at the registration. No expenses will be reimbursed for any other accompanying persons (i.e. Interpreters, Assistant Team Leaders, Coaches, Chaperones, Medical Personnel, Team Officials, etc.).



6. PRACTICE

Official practices for Competitors begin on Sunday, January 18th, 2009. The detailed schedule will be issued at the time of registration. Rule 540, paragraph 4 and Rule 629, paragraph 7 must be observed.

7. MUSIC

All competitors shall furnish competition music of excellent quality on either MD (Mini Disk) or CD (Compact Disk) format. The disks must show the exact running time of the music (not skating time), which shall be certified by the competitor and by the coach, when submitted at the time of registration. Each program (short/free/interpretive free) must be recorded on one track and on a separate disk. Competitors must provide a back-up drive for each program. The titles, composers and orchestras of the music to be used for the Short Program and Free Skating Program for Singles and Pairs, for the Original and Free Dance Program for Ice Dance and for the Exhibition, must be listed for each Competitor on the official Music Selection Form and attached to the official Entry Form for Competitors, according to Rule 378, paragraph 4 (sent by registered mail or fax).

In accordance with Rule 343, paragraph 1, all disks must show the Competition event, Competitors name, the Nation and the exact running time of the music - not skating time - including any starting signal and must be submitted at the time of registration.

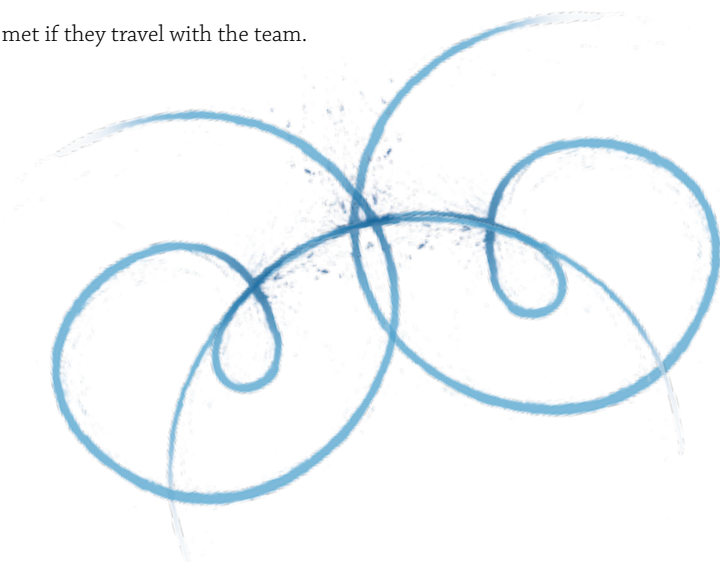
If music information is not complete and disks not provided, accreditation will not be given.

8. ARRIVAL OF PARTICIPANTS

All ISU Event Officials, Competitors, Team Leaders and Team Officials taking part in the Championships are requested to announce as soon as possible but not later than **December 29th, 2008**, to the Organizing Committee, on the enclosed forms, the names of the airlines, flight numbers, dates and times of arrival at the Helsinki - Vantaa International Airport, Port of Helsinki, or Helsinki Main Railway Station.

All announced team-members will be met by the Organizing Committee at Helsinki - Vantaa International Airport, Port of Helsinki, or Helsinki Main Railway Station.

Coaches, Team Medical Staff and Chaperones are only met if they travel with the team.



9. REGISTRATION

All ISU Office Holders, ISU Event Officials, Competitors, Team Leaders, Team Officials, Team Medical Staff and one Coach (per competitor) taking part in the Championships are requested to register for the "ISU European Figure Skating Championships 2009 Helsinki" as follows:

Accreditation for ISU Office Holders, ISU Event Officials and Teams will be located in the "Hotel Scandic Continental" and for the Media at "Hartwall Areena – Press Centre".

All skaters and judges will be required to present their passport or other official Schengen travel document for those being resident in Schengen countries (and Clearance Certificate if passport is not the same as the Member entering the skater) prior to receiving accreditation. Accreditation will not be issued without presentation of a valid passport or the Schengen document.

10. OFFICIAL HOTEL

The official hotel for ISU Office Holders, ISU Event Officials, Judges, Team Officials and Federation Presidents, Skaters, Team Leaders, Coaches, Assistant Team Leaders and Team Medical Staff is the:

Scandic Continental
Mannerheimintie 46
FI-00260 Helsinki, Finland
Telephone: +358 (0)9 4737 1
Fax: +358 (0)9 4737 2211
E-mail:continentalhelsinki@scandic-hotels.com

11. OPENING CEREMONY ON ICE

The Opening Ceremony on Ice will take place on Tuesday, January 20th, 2009 at 18.45 h, in the Main Arena "Hartwall Areena".

12. DRAWS - ORDER OF SKATING

The draws for the order of skating will be held individually per discipline at the "Hartwall Areena – Press Conference and Draw room". The dates, places and time will be provided at Registration.

13. EXHIBITION

All medalists and other Competitors will be selected to give an exhibition on Sunday afternoon, January 25th, 2009 - 15.30 h to 18.00 h, at "Hartwall Arena" according to Rule 104, paragraph 17 a) and b).

14. LIABILITY

In accordance with Rule 119, It is the sole obligation of each ISU Member participating in ISU Events, as defined in Rule 107, to provide medical and accident insurance for their athletes, officials and all other members of the ISU Member's team. Such insurance must assure full medical attendance and also the return of the ill or injured person to the home country by air transport or by other expeditious.

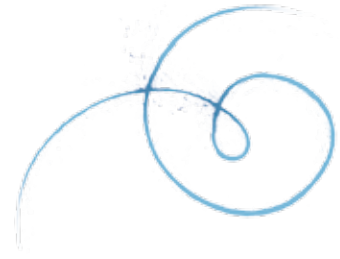
The ISU assumes no responsibility for or liability with respect to bodily or personal injury or property damage incurred in connection incurred by Competitors and Officials.

15. ANTI-DOPING

The Anti-Doping tests will be conducted in accordance with the current ISU Anti-Doping Rules & Procedures (ISU Communications No. 1447 and 1448 or any further update of this Communication).

The tests will be carried out on the four (4) best placed skater/s in Singles (after the final Free Skating), Pair Skating (after the Free Skating) and Ice Dance (after the Free Dance). One skater from the remainder of the skaters shall be selected by random draw in Singles, Pair Skating and Ice Dance. In Pair Skating and Ice Dance, either the man or the lady, but not both, shall be tested and shall be selected by random draw.





16. TITLES AND MEDALS

The winners will bear the title according to Rule 133:

European Figure Skating Champion for 2009
Lady European Figure Skating Champion for 2009
European Pair Champions for 2009
European Ice Dance Champions for 2009

ISU gold medals will be awarded to the Champions and ISU silver and bronze medals to the second and third placed Competitors at the end of the finals in each discipline.

In accordance with Rule 134, paragraph 3f), a small ISU gold medal will be awarded to the winner of each event (Short Program and Free Skating for Ladies, Men and Pairs and Compulsory Dance/Original Dance combined and Free Dance for Ice Dance) and small silver and bronze medals to the second and third in each category, but no anthem will be played or flags raised. The distribution will be made according to Rule 134, paragraph 3f).

17. NATIONAL ANTHEM

The Organizing Committee asks all Members to bring a copy of their National Anthem on MD or CD.

18. INFORMATION

For further information, please contact:

ISU European Figure Skating Championships 2009

Finnish Figure Skating Association

Radiokatu 20

FIN-00093 SLU, Helsinki,

Finland

Phone: +358 400 819 179 or +358 400 861 307

Fax: +358 9 3487 2044

E-mail: info.ec2009@gmail.com

19. SCHEDULE OF EVENTS

Date	Time	Event	Place
Sunday, January 18		1st Official Practice	Hartwall Arena
	10:00	Team Leaders Meeting	Hotel Scandic Continental
Monday, January 19	16:00	Referees and Technical Controllers Meeting	Hotel Scandic Continental
	17:00	Initial Judges Meeting ICE DANCE	Hotel Scandic Continental
	18:00	Initial Judges Meeting PAIRS	Hotel Scandic Continental
	20:30	ISU and Judges Dinner	Restaurant
Tuesday, January 20	13:30	Ice Dance – Compulsory Dance	Hartwall Arena
	15:00	Initial Judges Meeting MEN	Hotel Scandic Continental
	18:45	OPENING ON ICE	Hartwall Arena
	19:30	Pairs – Short Program	Hartwall Arena
Wednesday, January 21	11:45	MEN – Short Program	Hartwall Arena
	18:30	PAIRS – Free Skating	Hartwall Arena
Thursday, January 22	09:00	Judges Round Table Discussion PAIRS	Hotel Scandic Continental
	13:00	ICE DANCE – Original Dance	Hartwall Arena
	15:00	Initial Judges Meeting for LADIES	Hotel Scandic Continental
	18:45	MEN – Free Skating	Hartwall Arena
Friday, January 23	09:00	Judges Round Table Discussion MEN	Hotel Scandic Continental
	11:00	LADIES – Short Program	Hartwall Arena
	18:40	Ice Dance – Free Dance	Hartwall Arena
Saturday, January 24	09:00	Judges Round Table Discussion ICE DANCE	Hotel Scandic Continental
	13:30	LADIES – Free Skating	Hartwall Arena
	20:30	Medal Winners Ceremony and Closing Banquet	Crowne Plaza Hotel
Sunday, January 25	08:00	Judges Round Table Discussion LADIES	Hotel Scandic Continental
	15:30	Exhibition Gala	Hartwall Arena

Please note: This schedule is subject to changes.



